



## Storm Water and Sanitary Sewer Culvert Restoration

As infrastructure ages, deterioration of storm, sanitary and combined sewer culverts are an inevitable and costly reality. The susceptibility to corrosion and deterioration are due to:

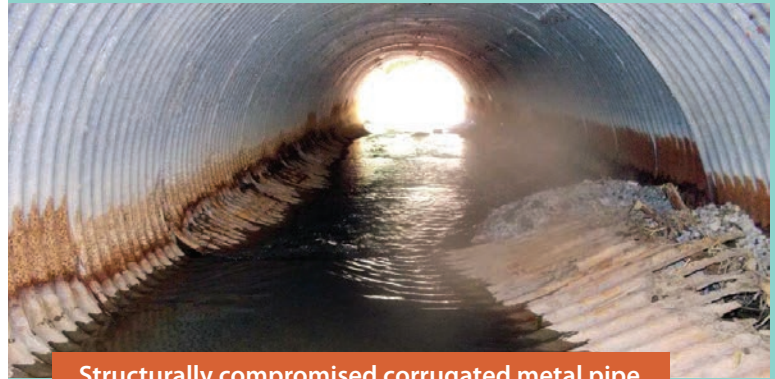
- Surface water inflow
- Traffic impact loading
- Chemical corrosion
- Freeze-thaw cycles

Long-term erosion of sub-surface drainage flow lines eventually compromises the concrete and metal construction. Once compromised, the water running through the culvert takes the sand, rock, dirt and backfill downstream, leaving voids underneath the pipes. Shifting then causes the surface pavement to settle or sink holes to open necessitating replacement or restoration of the line.

### Culvert Restoration Services

- Corrugated Metal Pipe
- Reinforced Concrete Pipe
- Precast Arched or Box Construction

## Culvert Restoration



Structurally compromised corrugated metal pipe

**Sewer Savers utilizes a cast-in-place restoration method.** This process extends the life of the culvert while providing a structurally sound and economical solution. The staging area for the work is small and there is minimal traffic flow disruption or diversion.

**Preparation of the compromised pipe is essential to the restoration process.** Using a bypass, we divert water around the pipe to allow us to remove loose debris. We use high-pressure water blasting (3,500 to 4,000 psi) to insure that the substrate is clean and free of sediment and other debris.

**Proper application extends the life of the concrete or pipe.** Our cementitious coating, containing a proprietary blend of additives, makes the final product impermeable. To prevent cracking and shrinkage, we apply epoxy to the base coat and a polymer topcoat.



Centrifugally cast high-strength cement

### Municipal & Contractor Sealing Products, Inc. dba



7740 Reinhold Dr.  
Cincinnati, OH 45237  
513-482-3300  
www.sewer-savers.com



Cement spin casting achieves final thickness